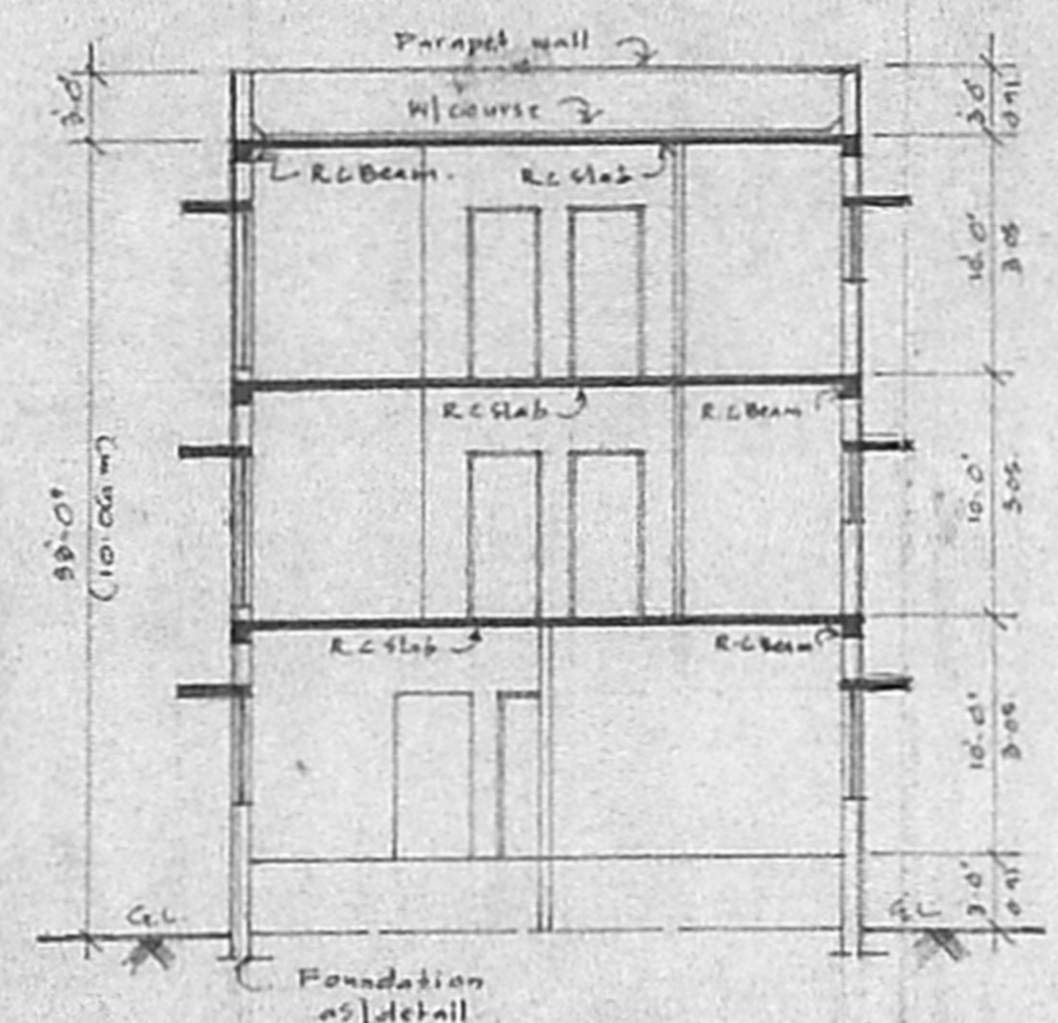
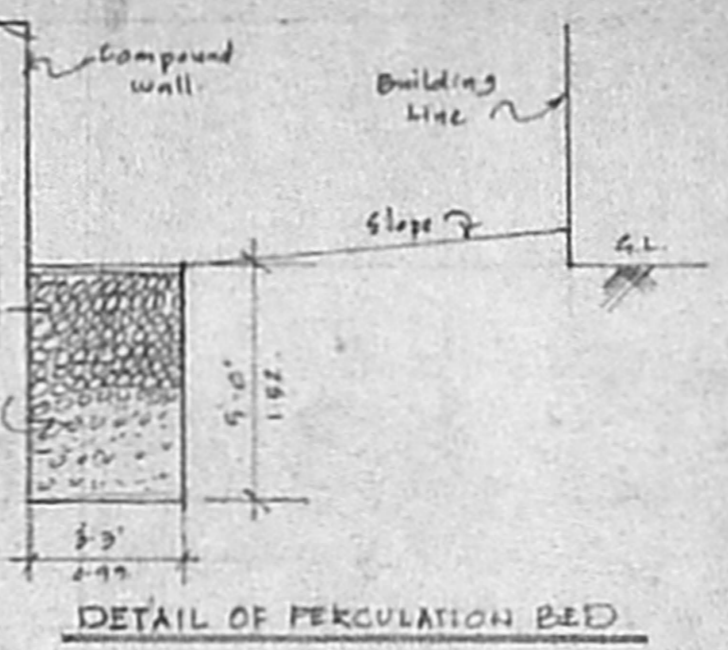


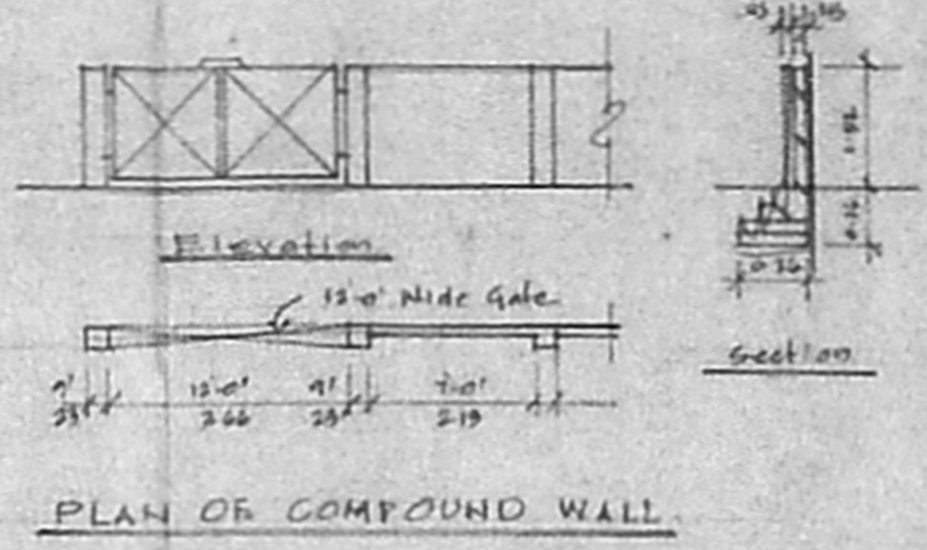
Front Elevation.



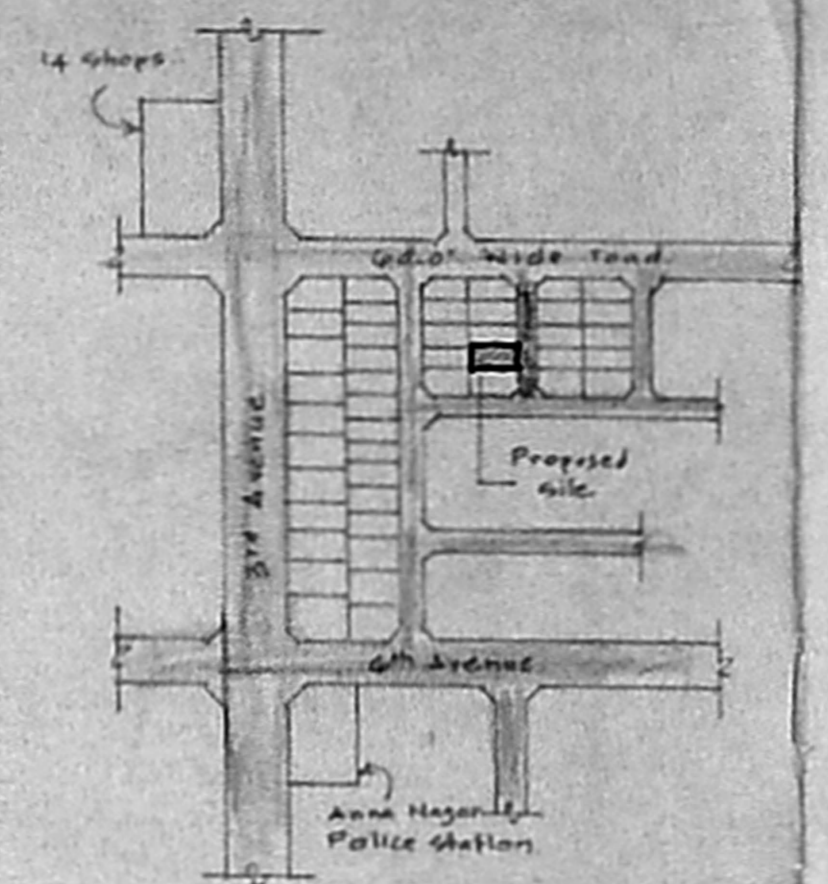
Section - A &.



DETAIL OF PERCUSSION BED

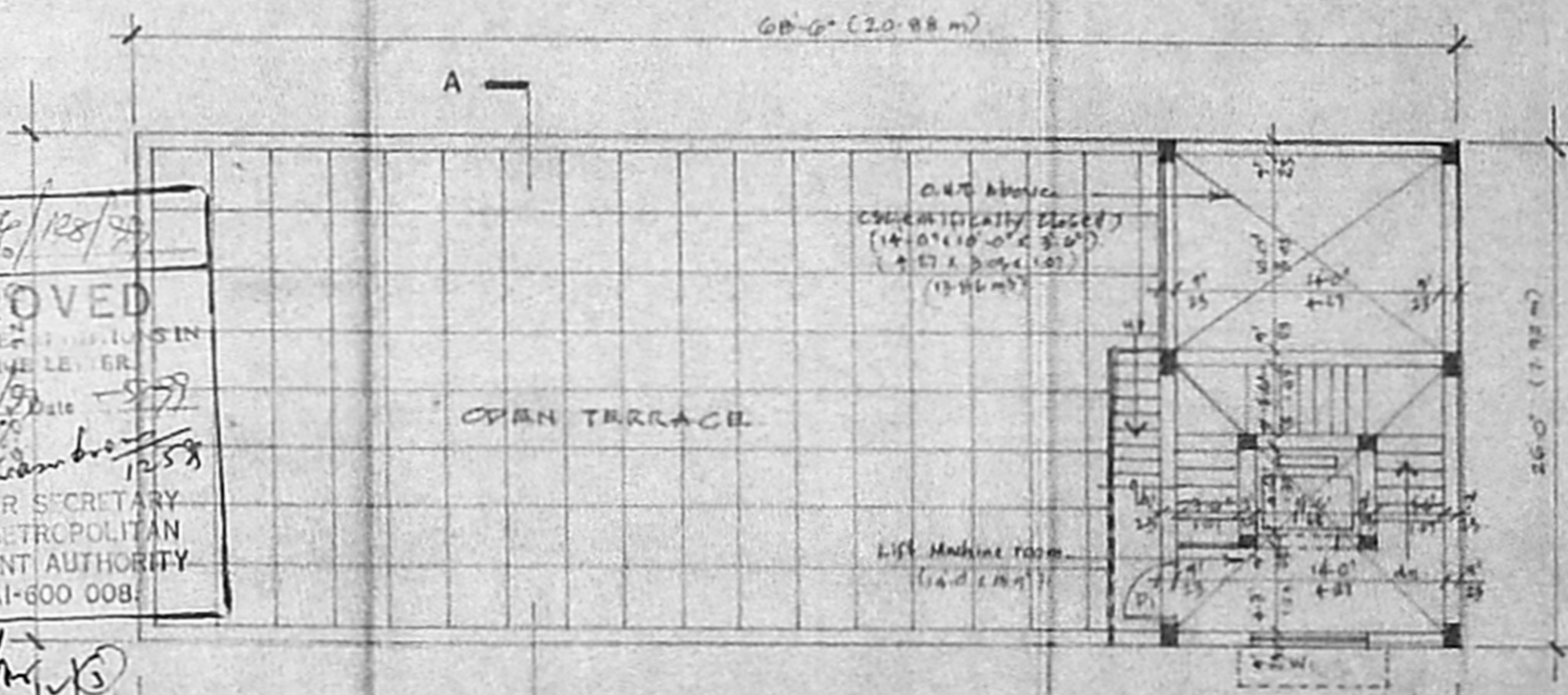


PLAN OF COMPOUND WALL

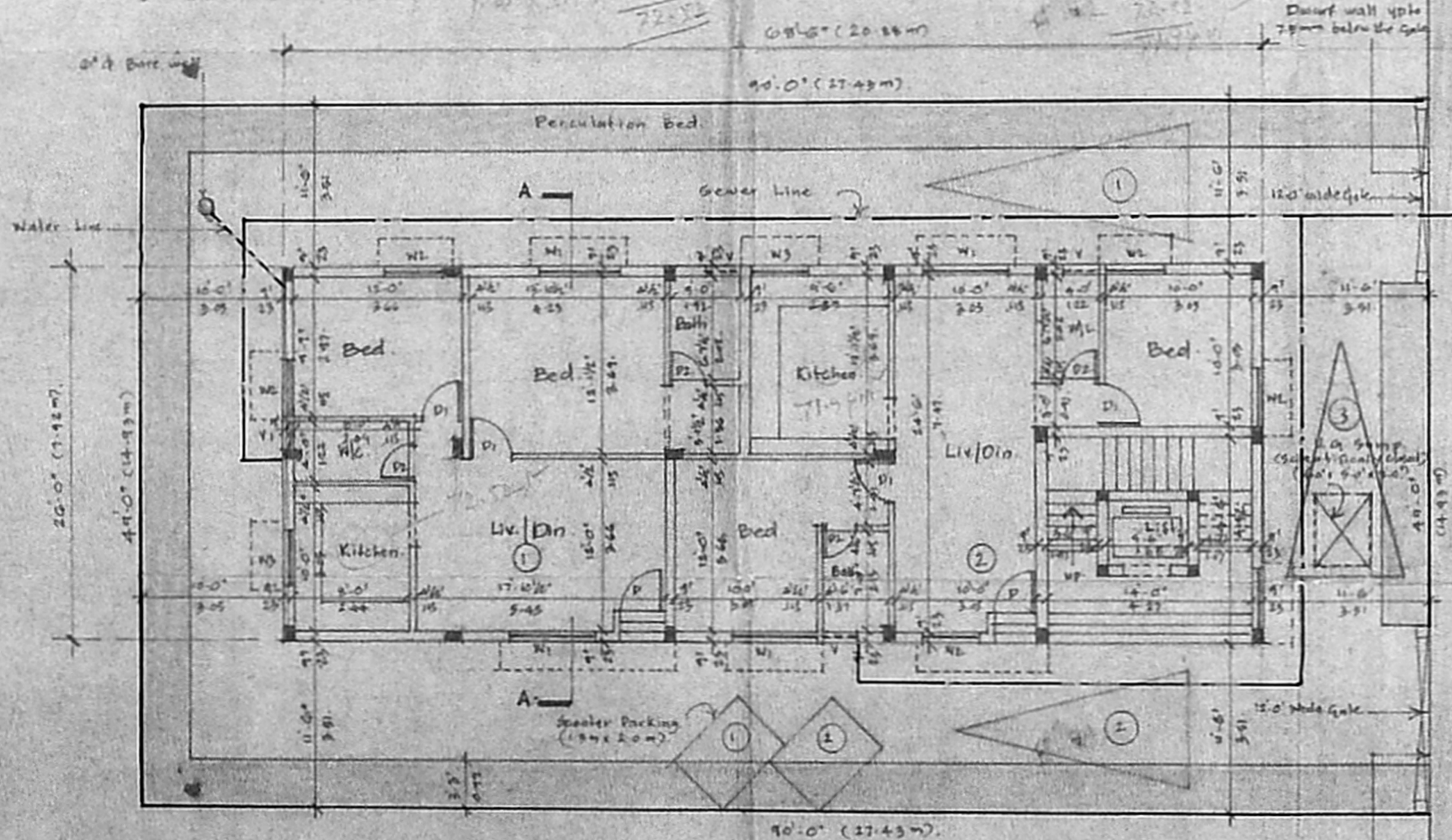


Key Plan.

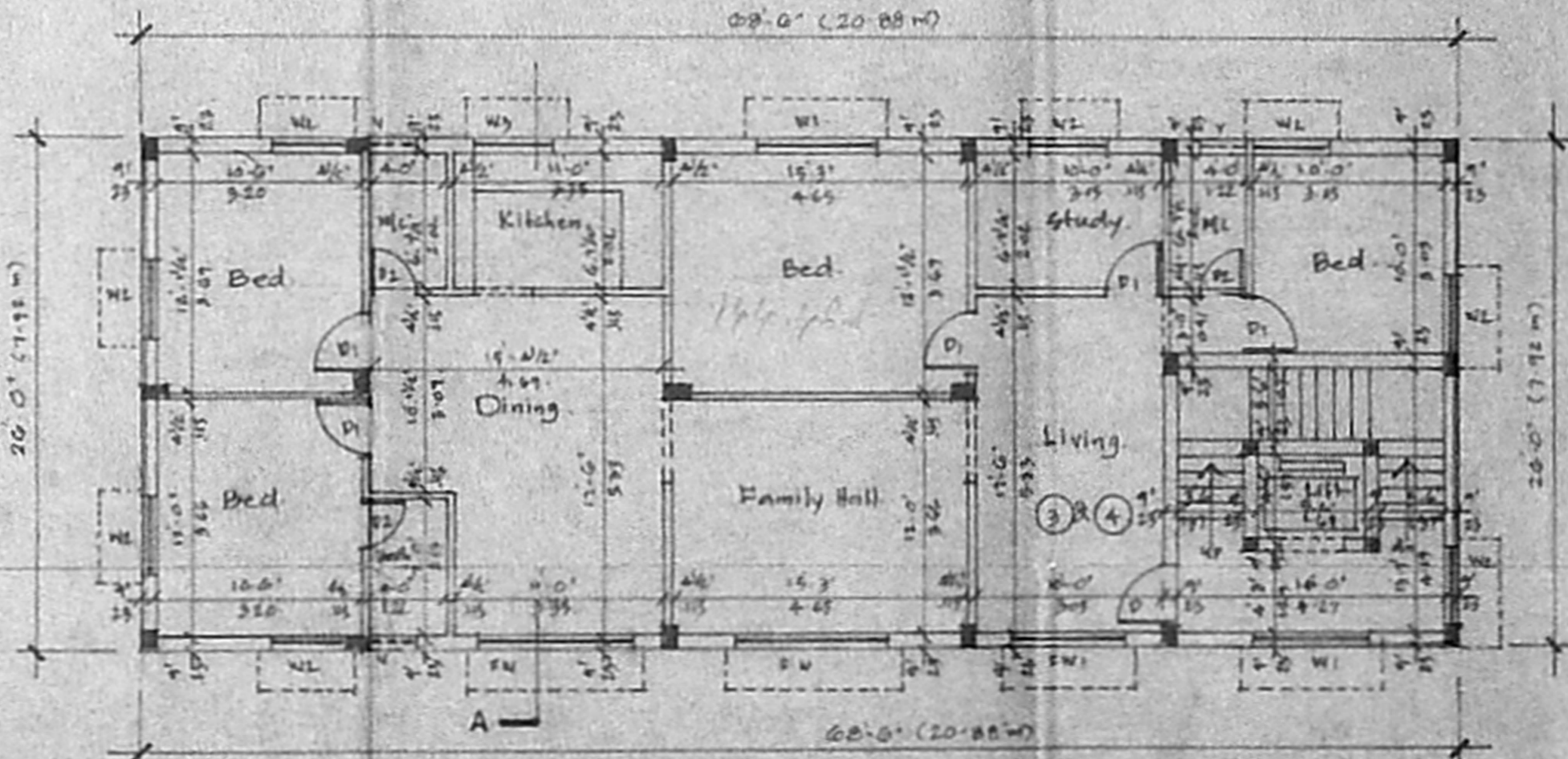
B/26384/125/99  
 Planning Permit No.  
**APPROVED**  
 SUBJECT TO THE CONDITIONS IN THIS ORDER.  
 No. B/2457/99 Date 15/11/99  
 For Member Secretary  
 CHENNAI METROPOLITAN DEVELOPMENT AUTHORITY  
 CHENNAI-600 008



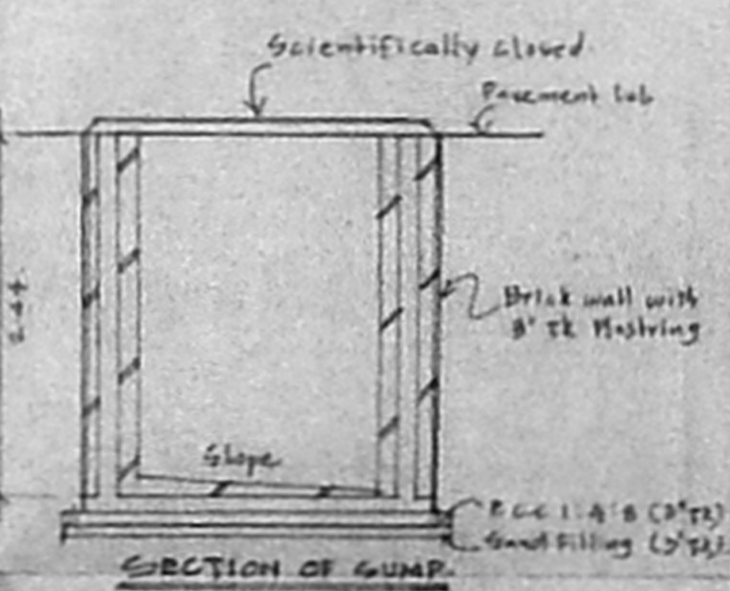
Terrace Floor Plan.



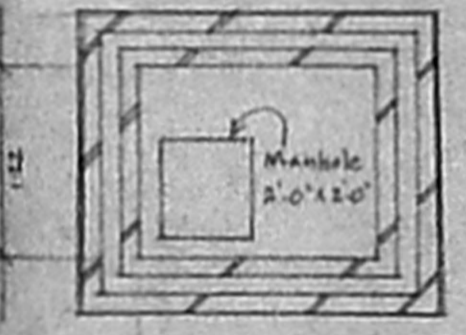
Site cum Ground Floor Plan.



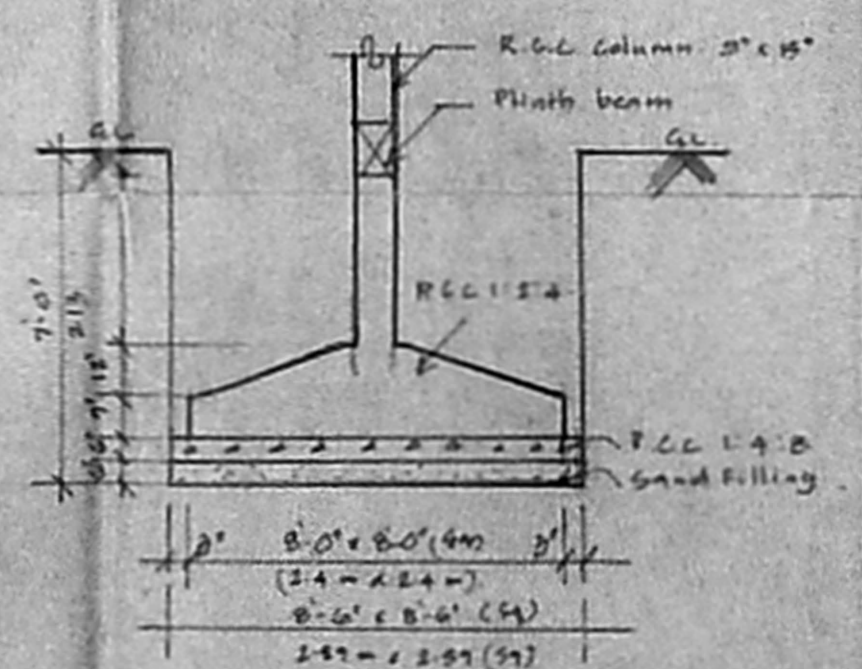
First & Second Floor Plan.



SECTION OF GUMP.



PLAN OF GUMP.



TYPICAL DETAIL OF FOUNDATION

**Schedule of Items:**

No.	Item	Height	Description
D1	Excavation	7-0"	12.3.99
D2	Excavation	7-0"	12.3.99
W1	Window	6-0"	12.3.99
W2	Window	6-0"	12.3.99
W3	Window	6-0"	12.3.99
W4	Window	6-0"	12.3.99
W5	Window	6-0"	12.3.99
W6	Window	6-0"	12.3.99
W7	Window	6-0"	12.3.99
W8	Window	6-0"	12.3.99
W9	Window	6-0"	12.3.99
W10	Window	6-0"	12.3.99
W11	Window	6-0"	12.3.99
W12	Window	6-0"	12.3.99
W13	Window	6-0"	12.3.99
W14	Window	6-0"	12.3.99
W15	Window	6-0"	12.3.99
W16	Window	6-0"	12.3.99
W17	Window	6-0"	12.3.99
W18	Window	6-0"	12.3.99
W19	Window	6-0"	12.3.99
W20	Window	6-0"	12.3.99
W21	Window	6-0"	12.3.99
W22	Window	6-0"	12.3.99
W23	Window	6-0"	12.3.99
W24	Window	6-0"	12.3.99
W25	Window	6-0"	12.3.99
W26	Window	6-0"	12.3.99
W27	Window	6-0"	12.3.99
W28	Window	6-0"	12.3.99
W29	Window	6-0"	12.3.99
W30	Window	6-0"	12.3.99
W31	Window	6-0"	12.3.99
W32	Window	6-0"	12.3.99
W33	Window	6-0"	12.3.99
W34	Window	6-0"	12.3.99
W35	Window	6-0"	12.3.99
W36	Window	6-0"	12.3.99
W37	Window	6-0"	12.3.99
W38	Window	6-0"	12.3.99
W39	Window	6-0"	12.3.99
W40	Window	6-0"	12.3.99
W41	Window	6-0"	12.3.99
W42	Window	6-0"	12.3.99
W43	Window	6-0"	12.3.99
W44	Window	6-0"	12.3.99
W45	Window	6-0"	12.3.99
W46	Window	6-0"	12.3.99
W47	Window	6-0"	12.3.99
W48	Window	6-0"	12.3.99
W49	Window	6-0"	12.3.99
W50	Window	6-0"	12.3.99
W51	Window	6-0"	12.3.99
W52	Window	6-0"	12.3.99
W53	Window	6-0"	12.3.99
W54	Window	6-0"	12.3.99
W55	Window	6-0"	12.3.99
W56	Window	6-0"	12.3.99
W57	Window	6-0"	12.3.99
W58	Window	6-0"	12.3.99
W59	Window	6-0"	12.3.99
W60	Window	6-0"	12.3.99
W61	Window	6-0"	12.3.99
W62	Window	6-0"	12.3.99
W63	Window	6-0"	12.3.99
W64	Window	6-0"	12.3.99
W65	Window	6-0"	12.3.99
W66	Window	6-0"	12.3.99
W67	Window	6-0"	12.3.99
W68	Window	6-0"	12.3.99
W69	Window	6-0"	12.3.99
W70	Window	6-0"	12.3.99
W71	Window	6-0"	12.3.99
W72	Window	6-0"	12.3.99
W73	Window	6-0"	12.3.99
W74	Window	6-0"	12.3.99
W75	Window	6-0"	12.3.99
W76	Window	6-0"	12.3.99
W77	Window	6-0"	12.3.99
W78	Window	6-0"	12.3.99
W79	Window	6-0"	12.3.99
W80	Window	6-0"	12.3.99
W81	Window	6-0"	12.3.99
W82	Window	6-0"	12.3.99
W83	Window	6-0"	12.3.99
W84	Window	6-0"	12.3.99
W85	Window	6-0"	12.3.99
W86	Window	6-0"	12.3.99
W87	Window	6-0"	12.3.99
W88	Window	6-0"	12.3.99
W89	Window	6-0"	12.3.99
W90	Window	6-0"	12.3.99
W91	Window	6-0"	12.3.99
W92	Window	6-0"	12.3.99
W93	Window	6-0"	12.3.99
W94	Window	6-0"	12.3.99
W95	Window	6-0"	12.3.99
W96	Window	6-0"	12.3.99
W97	Window	6-0"	12.3.99
W98	Window	6-0"	12.3.99
W99	Window	6-0"	12.3.99
W100	Window	6-0"	12.3.99

**Area Statement:** Sq. Ft. Sq. M.

**PLOT AREA:** 1440.00 : 133.69

**Proposed Construction:**

Ground Floor Area: 1781.00 : 165.52

First Floor Area: 1781.00 : 165.52

Second Floor Area: 1781.00 : 165.52

Total Builtup Area: 5343.00 : 496.56

P. S. I. Applied For: 1-21

Plot Coverage: 40%

**Legend:**

Proposed Construction: [Symbol]

Boundary Line: [Symbol]

R. C. C. Slab: [Symbol]

Sewer Line: [Symbol]

Water Line: [Symbol]

**Owner:**

[Signature]

**Job Title:**

Proposed Residences at  
 Plot No: 3716 & Block - 69  
 Anna Nagar, Chennai - 40  
 Bearing R.S. No. 23 Pt & 25 Pt  
 T.S. No. 79, Block - 3  
 Mulla Village Madras Dist  
 For Mr. G. Kasturi Raj  
 (Power Agent)

Scale: 1" = 8'-0" Date: 11.03.99

**Licensed Surveyor:**

V. Srinivasan  
 V. SRINIVASAN, A.I.A.  
 Registered Architect - CA/92/1755  
 Licensed Surveyor - Corporation of Chennai  
 24, No. 24  
 6, South Road, West C.I.T. Nagar  
 Chennai - 600 035. Phone: 433 82 62